



SUIT CUSTOMIZATION TUTOR



CREATE YOUR SPECIAL **TECNICA-S**

IA01850
FIA HOMOLOGATED



GREY AREA:

CHOOSE THE COLOUR FROM PALETTE 1 FOR LIGHT FABRICS OR PALETTE 2 FOR STANDARD FABRICS



YELLOW AREA:

CHOOSE THE COLOUR FROM PALETTE 4



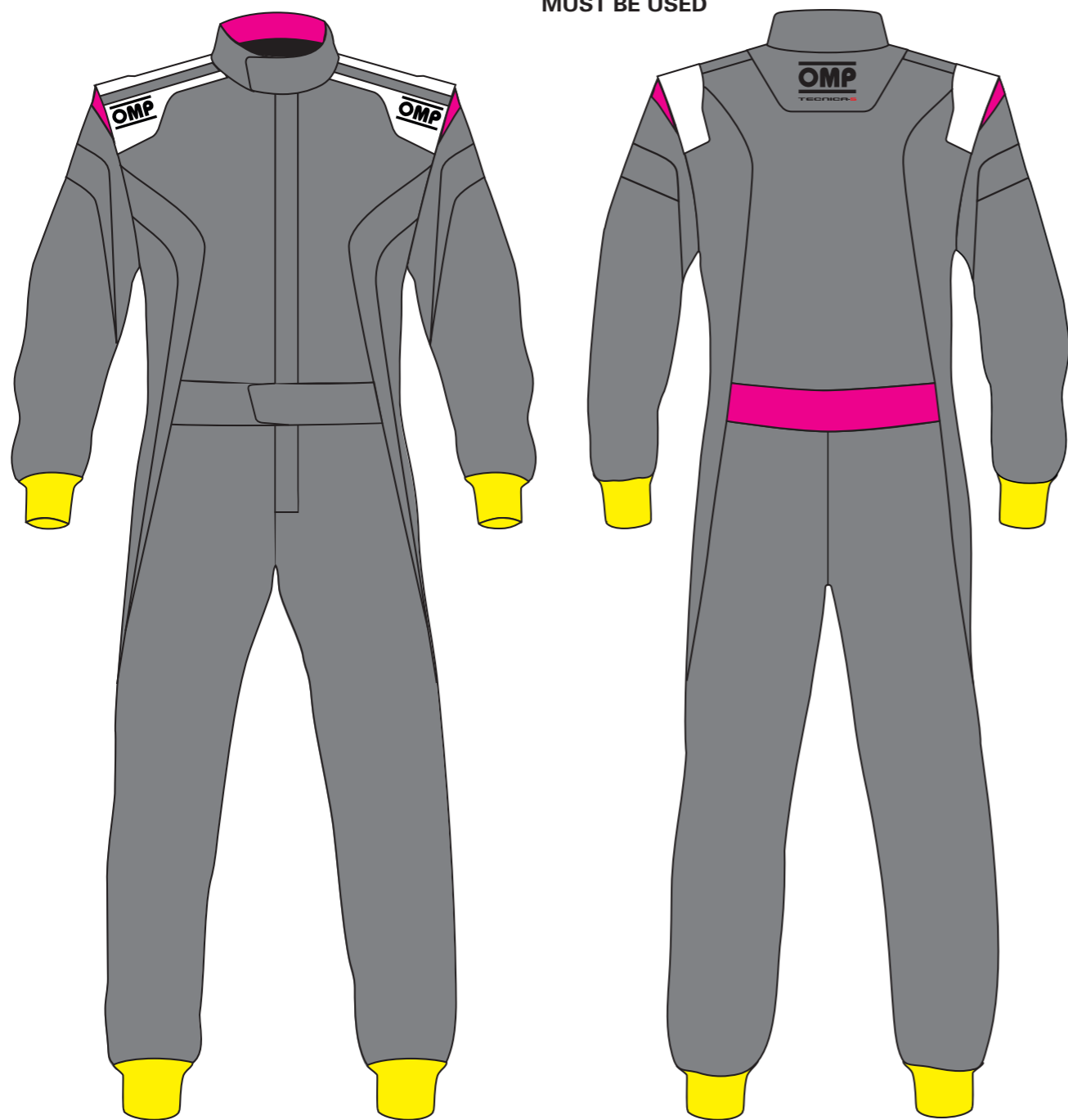
WHITE AREA:

CHOOSE THE COLOUR FROM PALETTE 1 FOR SHOULDER STRIPES A DIFFERENT COLOUR MUST BE USED



PINK AREA:

CHOOSE THE COLOUR FROM PALETTE 3



PALETTE 1 SHINE SATIN FABRIC 3 LAYERS - 350 gr/m²

WHITE X/132/020	SILVER X/132/080	LIGHT BLUE X/132/040	ROYAL BLUE X/132/041	NAVY BLUE X/132/042	VIOLET X/132/001	DARK GREEN X/132/033	FLUO GREEN FLUO X/132S/039	GOLD X/132/002	LEMON X/132/056	YELLOW X/132/051
ORANGE X/132S/091	RED X/132/061	DARK RED X/132/069	BORDEAUX X/132/070	DARK GREY X/132/082	BLACK X/132/071	PINK X/132/009				



PALETTE 2 SATEEN 3 LAYERS - 400 gr/m²

CYAN X/131/144	ROYAL BLUE X/131/041	NAVY BLUE X/131/042	GREEN X/131/037	YELLOW X/131/051	ORANGE X/132S/091	RED X/131/061	BORDEAUX X/131/069	DARK GREY X/131/082
BLACK X/131/071	SILVER X/131/080							



PALETTE 3 INTERLOCK FABRIC

WHITE X/102/020	SILVER X/102/081	ROYAL BLUE X/102/041	NAVY BLUE X/102/042	YELLOW X/102/051	RED X/102/061	ECRÙ X/102/028	DARK GREY X/102/082	BLACK X/102/071
--------------------	---------------------	-------------------------	------------------------	---------------------	------------------	-------------------	------------------------	--------------------



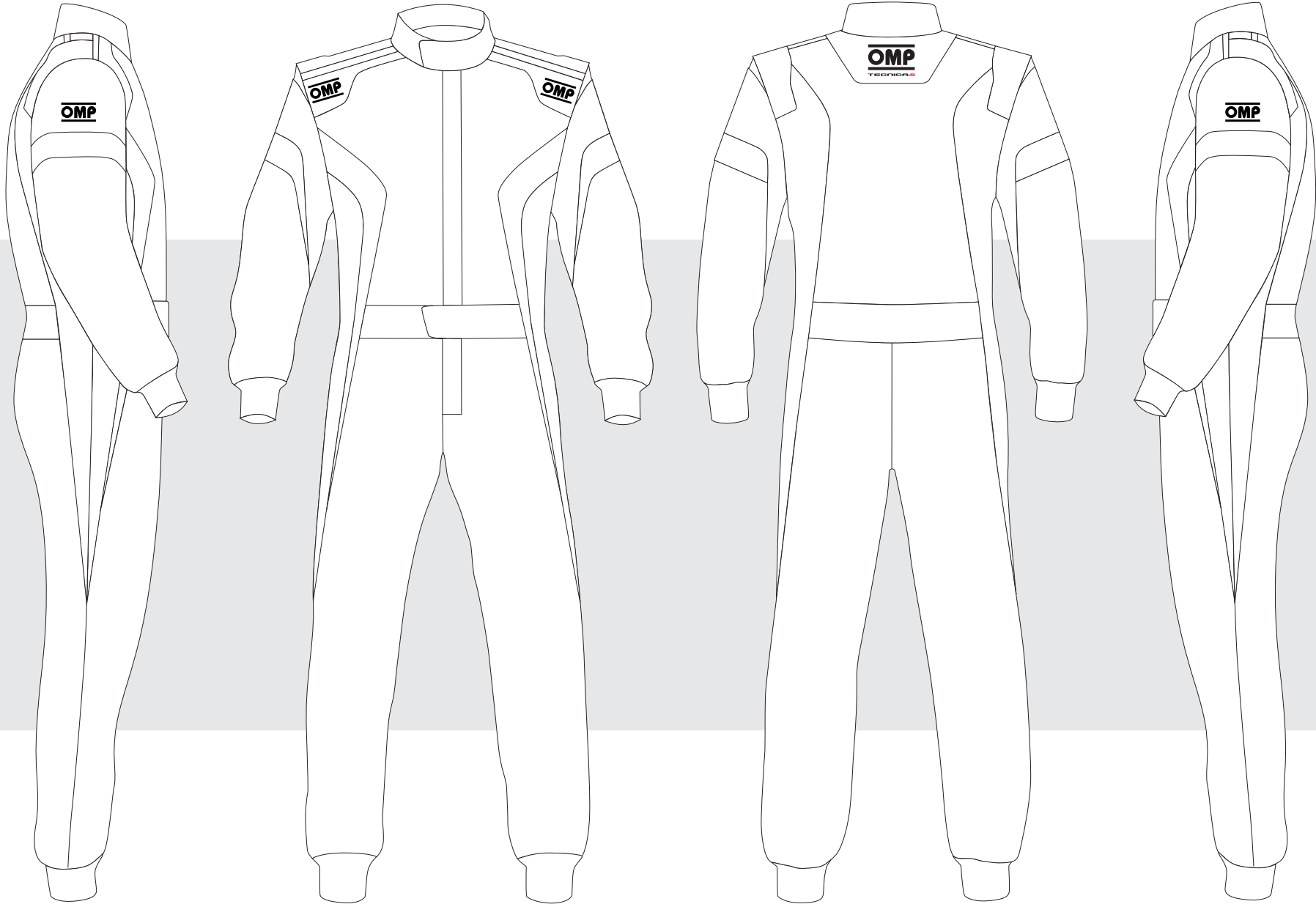
PALETTE 4 WRIST AND ANKLE CUFFS FABRIC

WHITE X/105/N/020	SILVER X/105/N/081	ROYAL BLUE X/105/N/041	NAVY BLUE X/105/N/042	RED X/105/N/061	ECRÙ X/105/N/022	DARK GREY X/105/N/082	BLACK X/105/N/071
----------------------	-----------------------	---------------------------	--------------------------	--------------------	---------------------	--------------------------	----------------------



CUSTOMER: _____ TEAM: _____ DRIVER NAME: _____

CUSTOMIZED SUIT CONFIGURATOR



TECNICA-S

OMP_IA01850_01_2016

IA01850

DATE: _____ REV. _____

© OMP RACING SPA - ALL RIGHTS RESERVED

THIS DESIGN IS THE INTELLECTUAL PROPERTY OF OMP RACING SPA - ANY REPRODUCTION WITHOUT PERMISSION WILL BE PROSECUTED TO THE FULLEST EXTENT OF THE LAW. By approving this sketch, the customer acknowledges that, during the process of manufacturing, variations may occur in colors and other minor aspects, because of the use of different technologies for the acquisition and reproduction of images, and for the making of the suit itself. OMP is not responsible for such variations and deviations. For further information: www.ompracing.com