



GREY AREA >60%

MAIN ASSEMBLY
MICROFIBRA FABRIC

WHITE AREA

FOR SHOULDER STRIPES A DIFFERENT AND
MONOCHROMATIC COLOR MUST BE USED

WHITE X/501/020	CYAN X/501/244	NAVY BLUE X/501/042	ROYAL BLUE X/501/041	RED X/501/061	ORANGE X/501/091	YELLOW X/501/055	FLUO YELLOW X/501/099	GREEN X/501/037	LIGHT GREEN X/501/039
BLACK X/501/071	ANTHRACITE X/501/082	GREY X/501/082	SILVER X/501/080						

BLUE AREA

STRETCH FABRIC - NOT PRINTABLE/EMBROIDERABLE

WHITE X/608/020	ROYAL BLUE X/608/041	NAVY BLUE X/608/042	RED X/608/061	ANTHRACITE X/608/082	BLACK X/608/071	FLUO YELLOW X/608/099
--------------------	-------------------------	------------------------	------------------	-------------------------	--------------------	--------------------------

GREEN AREA

DRY SYSTEM FABRIC - NOT PRINTABLE/EMBROIDERABLE

WHITE X/604/020	ROYAL BLUE X/604/041	RED X/604/061	DARK GREY X/604/082	FLUO YELLOW X/604/099	BLACK X/604/071
--------------------	-------------------------	------------------	------------------------	--------------------------	--------------------

YELLOW AREA

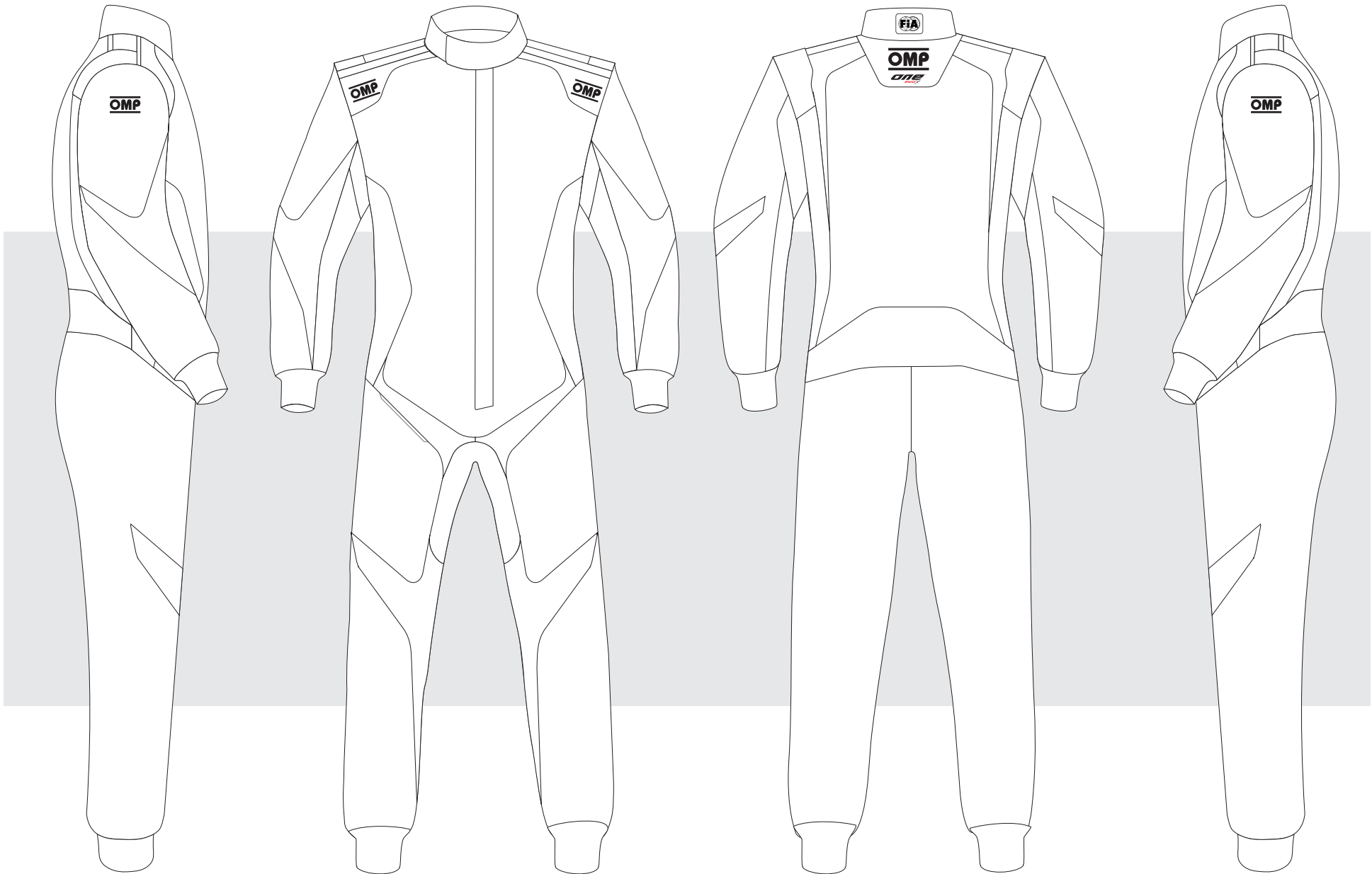
WRIST AND ANKLE CUFF'S FABRIC

WHITE X/105/N/020	SILVER X/105/N/081	ROYAL BLUE X/105/N/041	NAVY BLUE X/105/042	RED X/105/N/061	ECRU X/105/N/022	DARK GREY X/105/N/082	BLACK X/105/N/071
----------------------	-----------------------	---------------------------	------------------------	--------------------	---------------------	--------------------------	----------------------



CUSTOMER: _____ TEAM: _____ DRIVER NAME: _____

CUSTOMIZED SUIT CONFIGURATOR



[A01861]

DATE: _____ REV. _____

© OMP RACING SPA - ALL RIGHTS RESERVED

THIS DESIGN IS THE INTELLECTUAL PROPERTY OF OMP RACING SPA - ANY REPRODUCTION WITHOUT PERMISSION WILL BE PROSECUTED TO THE FULLEST EXTENT OF THE LAW.
By approving this sketch, the customer acknowledges that, during the process of manufacturing, variations may occur in colors and other minor aspects, because of the use of different technologies for the acquisition and reproduction of images, and for the making of the suit itself. OMP is not responsible for such variations and deviations. For further information: www.ompracing.com