



# SUIT CUSTOMIZATION TUTOR



PALETTE 1 LIGHT FABRIC 3 LAYERS - 235 gr/m<sup>2</sup>

CREATE YOUR SPECIAL

**one-S**

IA01853

FIA HOMOLOGATED



### GREY AREA:

CHOOSE THE COLOUR FROM PALETTE 1 FOR SUPER LIGHT FABRICS OR PALETTE 2 FOR LIGHT FABRICS



### CYAN AREA:

CHOOSE THE COLOUR FROM PALETTE 3



### WHITE AREA:

CHOOSE THE COLOUR FROM PALETTE 1 FOR SHOULDER STRIPES A DIFFERENT COLOUR MUST BE USED



### PINK AREA:

CHOOSE THE COLOUR FROM PALETTE 4



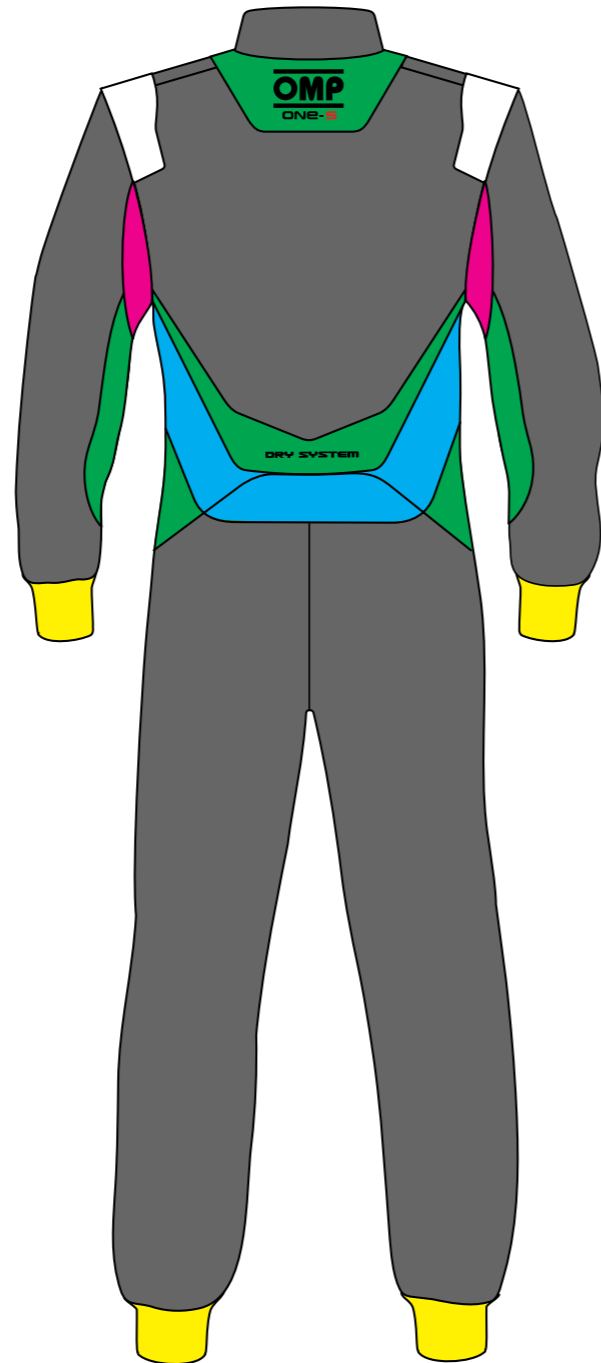
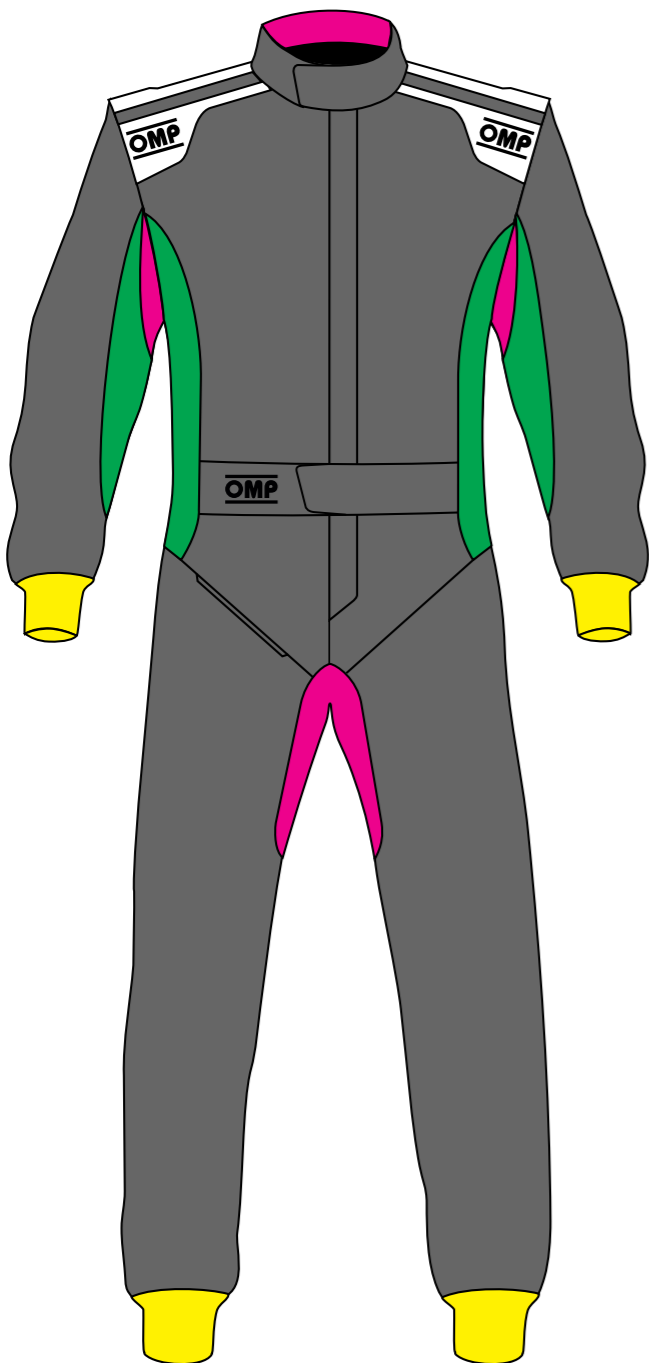
### YELLOW AREA:

CHOOSE THE COLOUR FROM PALETTE 5



### GREEN AREA:

CHOOSE THE COLOUR FROM PALETTE 6



WHITE X/133/020	SILVER X/133/080	CYAN X/133/244	ROYAL BLUE X/133/041	NAVY BLUE X/133/042	GOLD X/133/002	YELLOW X/133/055	FLUO YELLOW FLUO X/133/099
GREY X/133/425C	DARK GREY X/133/082	BLACK X/133/071	GREEN X/133/032	DARK GREEN X/133/033	FLUO GREEN FLUO X/133/039	ORANGE X/133/091	RED X/133/061



PALETTE 2 SHINE SATIN FABRIC 3 LAYERS - 280 gr/m<sup>2</sup>

WHITE X/132/020	SILVER X/132/080	LIGHT BLUE X/132/040	ROYAL BLUE X/132/041	NAVY BLUE X/132/042	DARK GREEN X/132/033	FLUO GREEN FLUO X/132S/039	GOLD X/132/002	LEMON X/132/056	YELLOW X/132/051
ORANGE X/132S/091	RED X/132/061	DARK RED X/132/069	BORDEAUX X/132/070	DARK GREY X/132/082	BLACK X/132/071	VIOLET X/132/001	PINK X/132/009		



PALETTE 3 STRETCH DRY SYSTEM FABRIC

WHITE X/602/020	ROYAL BLUE X/602/041	NAVY BLUE X/603/042	DARK GREY X/602/082	BLACK X/602/071	RED X/602/061	SILVER X/602/080	FLUO YELLOW FLUO X/602/099
--------------------	-------------------------	------------------------	------------------------	--------------------	------------------	---------------------	----------------------------------



PALETTE 4 INTERLOCK FABRIC

WHITE X/102/020	SILVER X/102/081	ROYAL BLUE X/102/041	NAVY BLUE X/102/042	YELLOW X/102/051	RED X/102/061	ECRÙ X/102/028	DARK GREY X/102/082	BLACK X/102/071
--------------------	---------------------	-------------------------	------------------------	---------------------	------------------	-------------------	------------------------	--------------------



PALETTE 5 WRIST AND ANKLE CUFFS FABRIC

WHITE X/105/N/020	SILVER X/105/N/081	ROYAL BLUE X/105/N/041	NAVY BLUE X/105/N/042	RED X/105/N/061	ECRÙ X/105/N/022	DARK GREY X/105/N/082	BLACK X/105/N/071
----------------------	-----------------------	---------------------------	--------------------------	--------------------	---------------------	--------------------------	----------------------



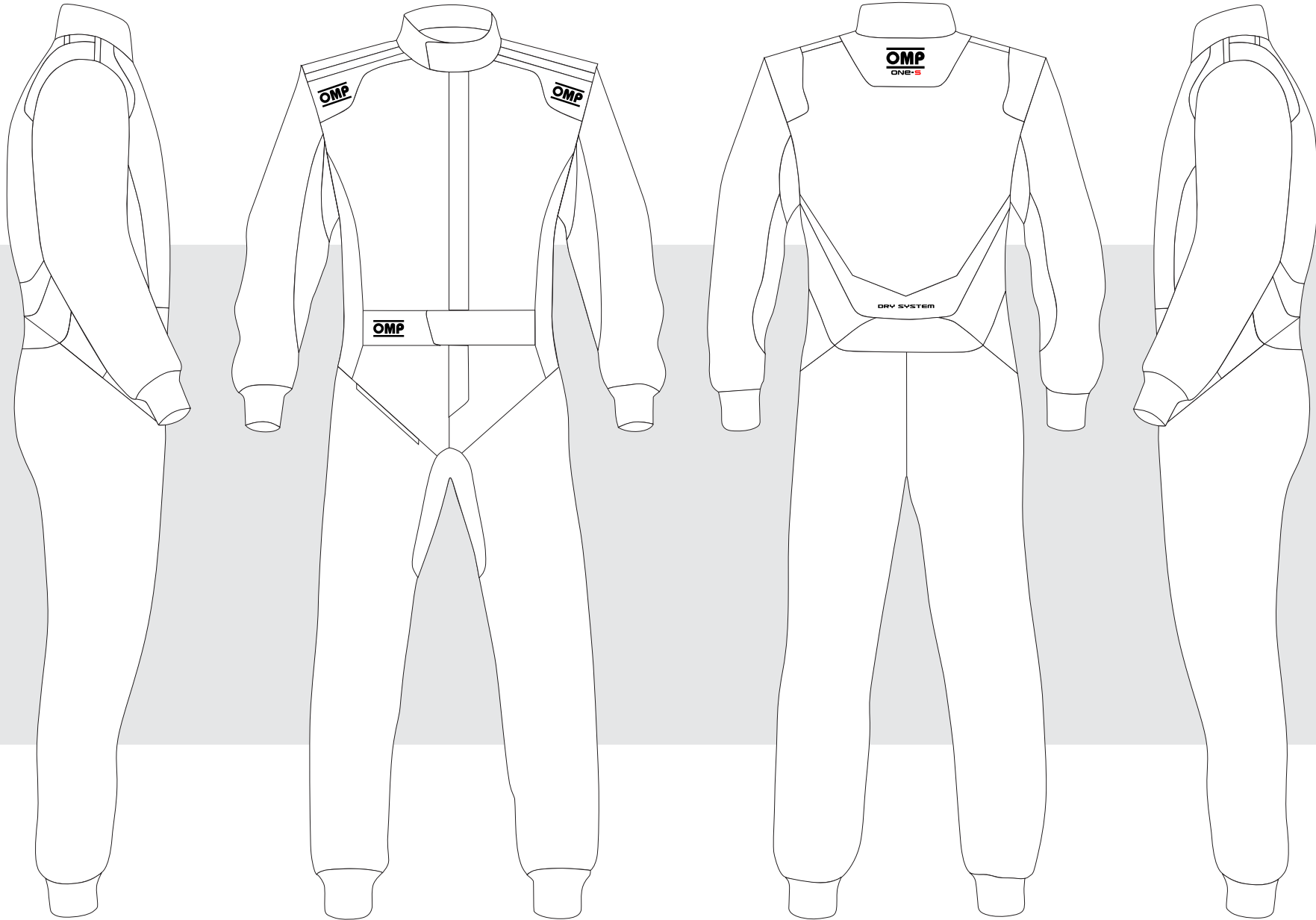
PALETTE 6 DRY SYSTEM FABRIC

WHITE X/600/020	ROYAL BLUE X/600/041	NAVY BLUE X/600/042	RED X/600/061	DARK GREY X/600/082	BLACK X/600/071
--------------------	-------------------------	------------------------	------------------	------------------------	--------------------



CUSTOMER: \_\_\_\_\_ TEAM: \_\_\_\_\_ DRIVER NAME: \_\_\_\_\_

CUSTOMIZED SUIT CONFIGURATOR



DATE: \_\_\_\_\_ REV. \_\_\_\_\_

© OMP RACING SPA - ALL RIGHTS RESERVED

THIS DESIGN IS THE INTELLECTUAL PROPERTY OF OMP RACING SPA - ANY REPRODUCTION WITHOUT PERMISSION WILL BE PROSECUTED TO THE FULLEST EXTENT OF THE LAW. By approving this sketch, the customer acknowledges that, during the process of manufacturing, variations may occur in colors and other minor aspects, because of the use of different technologies for the acquisition and reproduction of images, and for the making of the suit itself. OMP is not responsible for such variations and deviations. For further information: [www.ompracing.com](http://www.ompracing.com)

ONE-S

OMP\_IA01853\_01\_2016

IA01853