

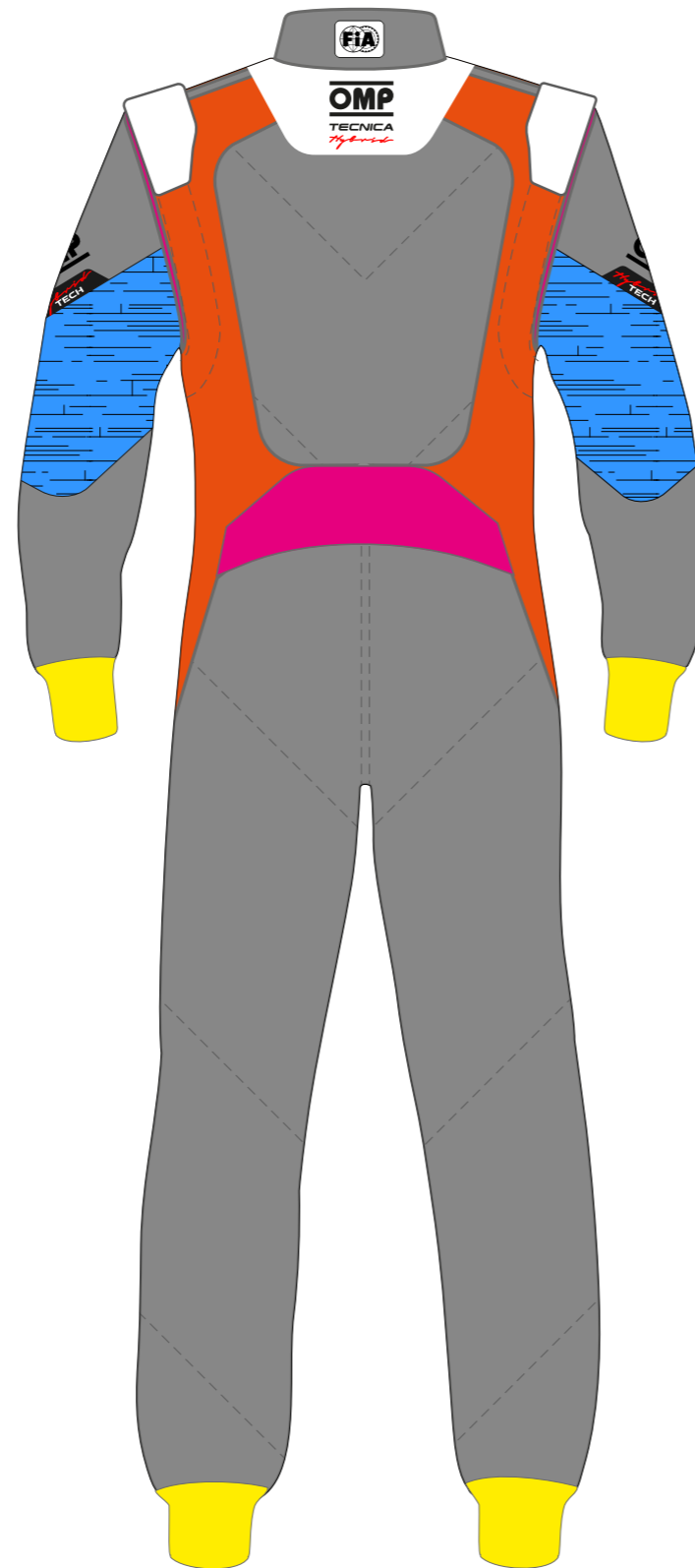
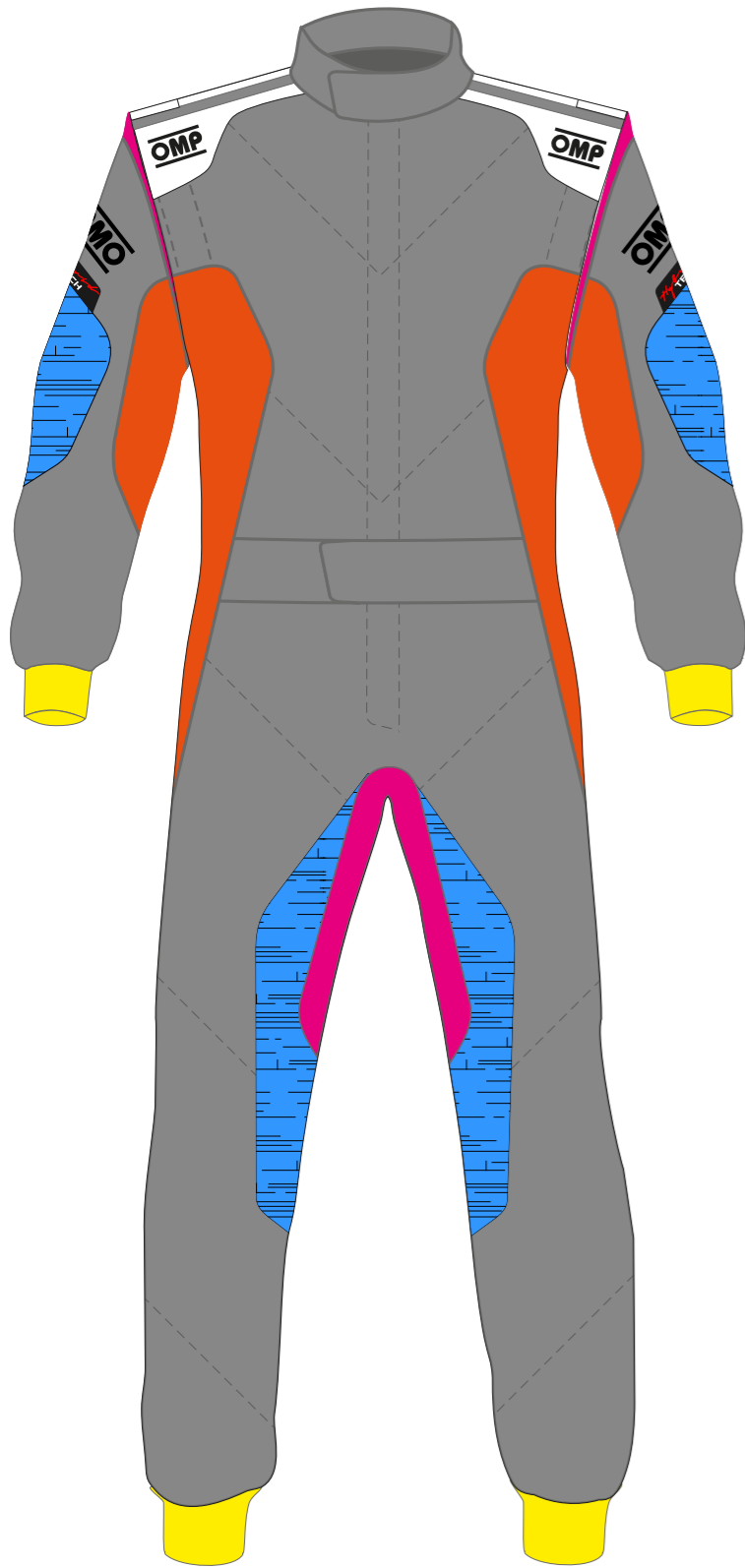


# SUIT CUSTOMIZATION TUTOR

# TECNICA Hybrid

IA1864

NEW STANDARD FIA 8856-2018



## GREY AREA MAIN ASSEMBLY

## WHITE AREA

FOR SHOULDER STRIPES A DIFFERENT AND MONOCHROMATIC COLOR MUST BE USED

CYAN X/147/244	NAVY BLUE X/147/042	RED X/147/061	WHITE X/147/020	SILVER X/147/083	ANTHRACITE X/147/084	BLACK X/147/071	TIFFANY X/147/318C	LIGHT BLUE X/147/040	FLUO YELLOW X/147/099
PINK X/147/226CS	YELLOW X/147/051	FLUO ORANGE X/147/090	ÉCRU X/147/022	FLUO GREEN X/147/039	ECRÛ X/147/022				

## ORANGE AREA

BREATHABLE FABRIC - NOT PRINTABLE/EMBROIDERABLE

WHITE X/604/020	ROYAL BLUE X/604/041	RED X/604/061	DARK GREY X/604/082	FLUO YELLOW X/604/099	BLACK X/604/071
--------------------	-------------------------	------------------	------------------------	--------------------------	--------------------

## PINK AREA

INTERLOCK FABRIC - NOT PRINTABLE/EMBROIDERABLE

WHITE X/102/020	SILVER X/102/081	ROYAL BLUE X/102/041	NAVY BLUE X/102/042	RED X/102/061	ECRÛ X/102/028	DARK GREY X/102/082	BLACK X/102/071	FLUO YELLOW X/102/099	YELLOW X/102/051
--------------------	---------------------	-------------------------	------------------------	------------------	-------------------	------------------------	--------------------	--------------------------	---------------------

## YELLOW AREA

WRIST AND ANKLE CUFF'S FABRIC

WHITE X/105/N/020	SILVER X/105/N/081	ROYAL BLUE X/105/N/041	NAVY BLUE X/105/042	RED X/105/N/061	ECRÛ X/105/N/022	DARK GREY X/105/N/082	BLACK X/105/N/071
----------------------	-----------------------	---------------------------	------------------------	--------------------	---------------------	--------------------------	----------------------

## SUBLIMATION PRINTING AREA

VECTOR GRAPHICS

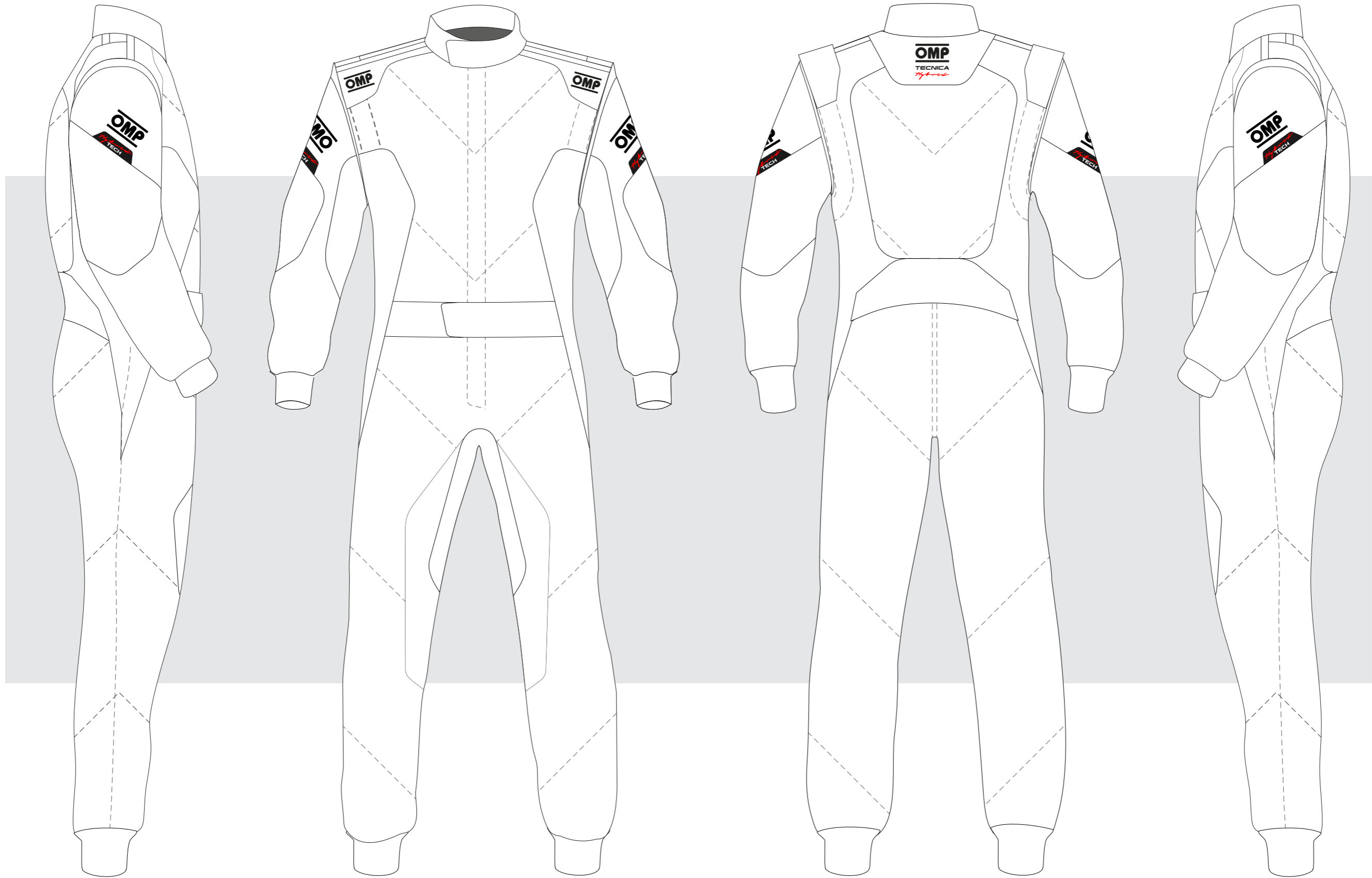


CUSTOMER: \_\_\_\_\_

TEAM: \_\_\_\_\_

DRIVER NAME: \_\_\_\_\_

CUSTOMIZED SUIT CONFIGURATOR



**TECNICA**  
*Hybrid*

**A1864**

© OMP RACING SPA - ALL RIGHTS RESERVED

DATE: \_\_\_\_\_ REV. \_\_\_\_\_

THIS DESIGN IS THE INTELLECTUAL PROPERTY OF OMP RACING SPA - ANY REPRODUCTION WITHOUT PERMISSION WILL BE PROSECUTED TO THE FULLEST EXTENT OF THE LAW. By approving this sketch, the customer acknowledges that, during the process of manufacturing, variations may occur in colors and other minor aspects, because of the use of different technologies for the acquisition and reproduction of images, and for the making of the suit itself. OMP is not responsible for such variations and deviations. For further information: [www.ompracing.com](http://www.ompracing.com)